



Ergonomic Performance

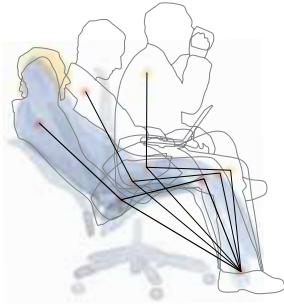
Feel better, work better

Research driven ergonomic solutions

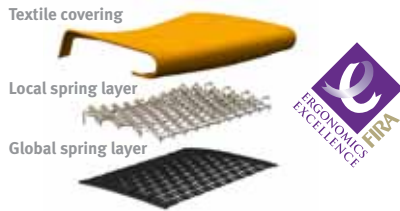
Support



Movement



Comfort



Adaptive



Ergonomic Performance

Feel better, work better

Research driven ergonomic solutions



Embody

- Supporting the spine Backfit™ - sacral, lumbar and thoracic support
- ‘Pocket sprung’ seat, doesn’t impede blood flow
- Supporting movement
- Frameless, narrow back
- Embody dual tilt
- Fits 98% of population



Aeron

- Woven synthetic Pellicle fabric with 2-way stretch conforms to body shape and distributes weight evenly
- Aeron’s Kinemat® tilt echoes the body’s movement providing support as the user moves from one position to another
- PostureFit sacral back support encourages the pelvis to be rotated forward, aligning the spine naturally
- A, B & C size together fit 99% of population



Mirra

- TriFlex™ back and Aireweave seat conform to body shape and provide even pressure distribution
- Mirra’s Harmonic™ tilt mechanism mirrors the sitter’s natural body movement
- Passive PostureFit: Integrated sacral back support
- Fits 95% of population



Celle

- Cellular seat and back are made of a pliable polymer that flexes to conform and adapt to user’s shape, weight and movement
- Celle’s Harmonic tilt mechanism mirrors the sitter’s natural body movement
- Passive PostureFit: Integrated sacral back support
- Fits 95% of population



SAYL

- SAYL back conforms to body shape and provides even pressure distribution
- Sayl tilt echoes the human body’s natural pivot points (hip, knee and ankle)
- Fits 93% of population
- Passive PostureFit: Integrated sacral back support